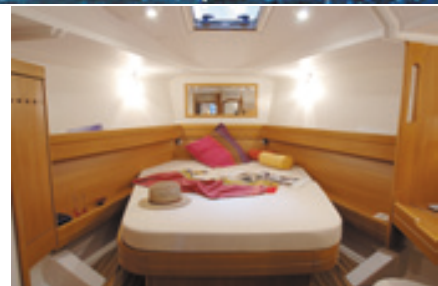


HARMONY YACHTS



HARMONY
47



31



34



38



42



47



52

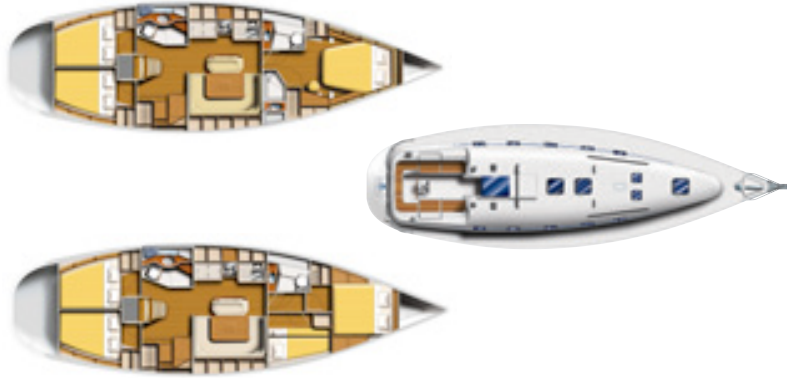
Harmony 47

The Harmony 47 is a strong, fast blue water cruiser, easy to handle and sail short handed in all weather conditions. She is extremely manoeuvrable entering marina's , berths and anchorages.

Now available with a choice of Elegance or Esprit specification. The classically styled hull shape and deck on Harmony yachts, ensures comfort, performance and ease of handling.

Your Harmony 47 can be customised with a range of inclusions to suit your sailing needs, from racing and performance cruising, through to short handed long distance sailing.

Available as 3 or 4 cabin, 2 head layout. The 3 cabin layout has a master suite with island berth, desk, two hanging lockers, private bathroom and private toilet. Additional bunks can be added with an extra starboard cabin with the 4 cabin layout.



Why Choose Harmony?

Over 25M Euro invested in a state of the art factory in La Rochelle, France.

Utilisation of high -tech & fully automated production techniques adopted from leaders in the automobile and aviation industries.

Use of Resin Transfer Moulding (RTM) - both throughout the deck and hull:-

NO OTHER PRODUCTION YACHT USES THIS TECHNOLOGY THROUGHOUT THE ENTIRE DECK & HULL

A clear sail away price, including sails, deck gear & standard electronics.

Choice of interior and exterior finishes Elegance or Esprit including teak cockpit, toe rail and hull graphics.

Sail Away package can be further customised to suit your sailing needs - cruising, off shore racing or short handed sailing

Harmony uses the world's best marine brands insuring performance and warranty guarantees

Outstanding performance and reviews in Australian boating media

True off shore capability

Proven as a true cruiser racer - winner PHS division Pittwater to Coffs Harbour race 2008 (Harmony 42)

For the performance minded owner, all Harmony Yachts can be customised with performance options which include: asymmetric, spinnaker, Code Zero, performance deep keel, folding propeller and upgraded deck gear.

Harmony 47 Specifications

Design	Oliver Poncin
Architecture	Mortain & Mavrikios
LOA	14.39 m
Maximum Beam	4.25 m
Deep Keel	2.15 m
Tandem Keel	1.65 m
Displacement	10650 Kg
Sail Area main & genoa	95 m2
Motor	55 hp
Fuel Capacity	200 l
Water Capacity	505 l
Certification	CE A8/B10
Layout	3 cab 2/3 head/4 cab 2 head